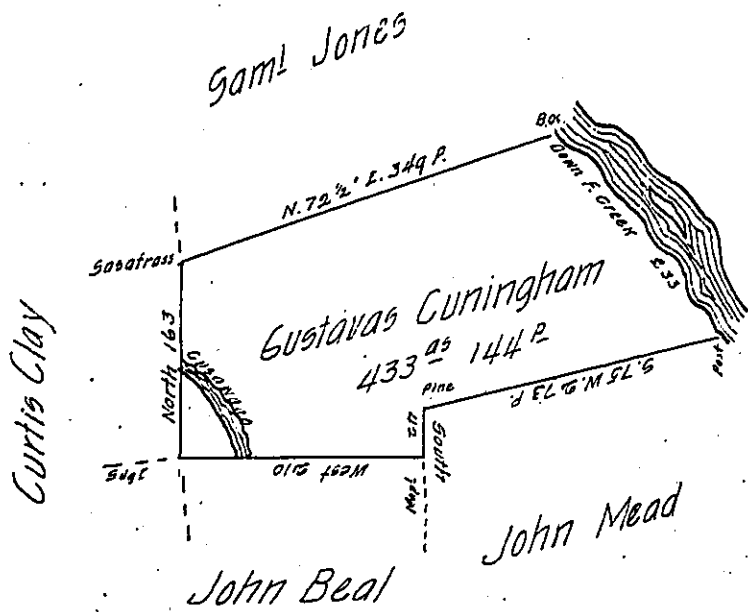


River Courses
 9.7° E. 52
 9.51° E. 15
 9.82° E. 41
 9.54° E. 20
 9.86° E. 30
 9.60° E. 22
 9.41½° E. 53
 233 P



Situate on the West side of and adjoining French Creek in Allegheny County containing 433⁹⁵/₁₀₀ P and Allowance of Six p Cent for Roads &c. Surveyed the 4th Day of May 1794 In pursuance of a Warrant dated the 13th Day of April 179²/₂

Wm Power D.Y. 95

To Danl Brodhead Esqr
 Surveyor General }

IN TESTIMONY that the above is a copy of the original remaining on file in the Department of Internal Affairs of Pennsylvania, made conformably to an Act of Assembly approved the 16th day of February, 1833, I have hereunto set my Hand and caused the Seal of said Department to be affixed at Harrisburg, this Eighteenth day of April 1904

Geo. P. Brown
 Secretary of Internal Affairs.